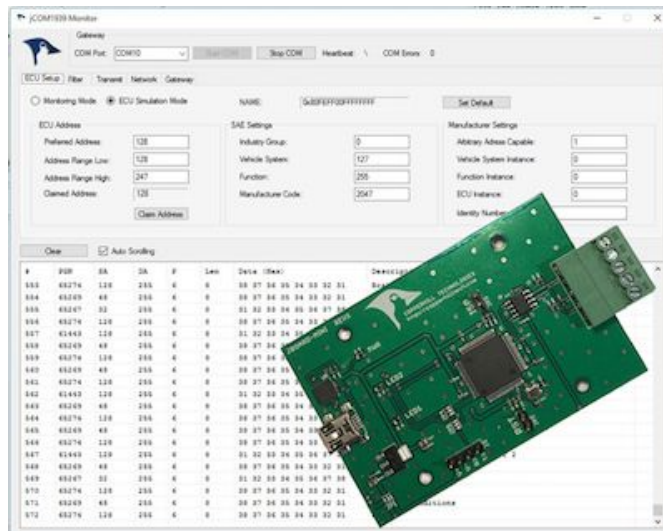




## SAE J1939 To USB Gateway For ECU Simulation And Data Monitoring



*Copperhill Technologies introduces its jCOM.J1939.USB gateway, a vehicle network adapter to monitor, simulate, and record SAE J1939 data traffic.*

**GREENFIELD, Mass. - Sept. 12, 2019 - [PRLog](#)** -- The [jCOM.J1939.USB gateway board](#) is a high-performance, low-latency vehicle network adapter for [SAE J1939](#) applications. It allows any host device with a USB COM port to monitor SAE J1939 data traffic, communicate with the SAE J1939 vehicle network, or record data (PGN) to an MS-Excel-compatible file.

The board supports the full SAE J1939 protocol according to J1939/81 Network Management (Address Claiming) and J1939/21 Transport Protocol (TP). An extensive programming interface supports Windows and Linux/Ubuntu applications, including full C/C++/C# source code for short time-to-market developments.

The strength of the board lies in the fact that the entire SAE J1939 protocol, including all timing requirements, is stored on-chip, thus taking the burden off the PC. The board uses a USB COM port to communicate with the PC, i.e., all data transfer is handled through a standard COM port access. The communication protocol between the board and the PC is well documented and thus enables easy porting to any computer system with a USB connection. Working source code libraries exist for [Windows \(C# under Visual Studio 2102/2013\)](#), [Linux and its derivatives \(C++ using Code::Blocks\)](#), and Raspberry Pi (C using the standard gcc compiler).

With all its features, the jCOM.J1939.USB allows the simulation of an SAE J1939 ECU (Electronic Control Unit) using embedded solutions such as the Raspberry Pi, BeagleBone, Arduino, Teensy, and others but also PCs running Windows or Linux (incl. Ubuntu, Fedora).

[More Information...](#)

## Contact

Wilfried Voss

[\\*\\*\\*@copperhillmedia.com](mailto:***@copperhillmedia.com)

413-213-2500

--- End ---

Source	Copperhill Technologies Corp.
City/Town	Greenfield
State/Province	Massachusetts
Country	United States
Industry	<a href="#">Computers</a> , <a href="#">Electronics</a> , <a href="#">Transportation</a>
Tags	<a href="#">Sae J1939</a> , <a href="#">Can-bus</a> , <a href="#">Gateway</a> , <a href="#">Simulator</a> , <a href="#">Data Monitoring</a> , <a href="#">Embedded System</a> , <a href="#">ARM Cortex</a> , <a href="#">Data</a>
<a href="#">Logger</a>	
Link	<a href="https://prlog.org/12788645">https://prlog.org/12788645</a>



Scan this QR Code with your SmartPhone to-

- \* Read this news online
- \* Contact author
- \* Bookmark or share online